

Injury attendances to Rochdale Infirmary Urgent Care Centre

October 2011 to September 2012

This report summarises recorded injury attendances to Rochdale Infirmary Urgent Care Centre (UCC) between October 2011 and September 2012.

Between October 2011 and September 2012, there were 21,283 injury attendances to Rochdale Infirmary UCC. Males accounted for over half (53%) of all attendances. The month with the highest attendances was March (n=2,112) with December (n=1,415) having the lowest attendances ([Figure 1](#)). The majority (68%) of attendances were recorded as other injury; of the specified injury groups falls accounted for the highest proportion (16%) followed by road traffic collision (RTC) (6%) and assault (3%) ([Table 1](#)).

The highest proportion of attendances was for persons aged 5 to 19 (27%) and 20 to 34 (24%) years ([Figure 2](#)). Over a quarter (26%) fall attendees were aged 65 or over. Over two-fifths (41%) RTC attendees were aged 20 to 34 years ([Figure 3](#)).

[Table 2](#) shows the location where injuries occurred. Over two-fifths (46%) of injuries occurred in the home; 13% of injuries occurred in a public place. Over two-fifths (41%) of falls occurred in the home whilst over two-thirds (67%) of deliberate self harm (DSH) injuries occurred in the home.

[Table 3](#) shows the ethnicity of attendees to Rochdale Infirmary ED. Over seven in ten (72%) were white and 19% were Pakistani.

The disposal of a patient can give an indication of the severity of the injuries sustained. Over six in ten (62%) of attendees were discharged, whilst over a third (35%) were referred and 3% were admitted ([Table 4](#)). Almost seven in ten (68%) of RTC attendees were discharged ([Table 5](#)).

[Table 6](#) shows the arrival methods of attendances at Rochdale Infirmary UCC. Almost three-quarters (74%) arrived by private transport whilst 8% arrived by taxi, 6% on foot and 3% by ambulance.

[Table 7](#) presents data on assault attendances at Rochdale Infirmary UCC. There were 744 assault attendances recorded between October 2011 and September 2012. Seven in ten (70%) were male whilst over four in ten (43%) were aged 20 to 34 years. Nearly half (46%) occurred in a public place.

Figure 1: Rochdale Infirmary UCC: Total injury attendances by gender and month, October 2011 to September 2012

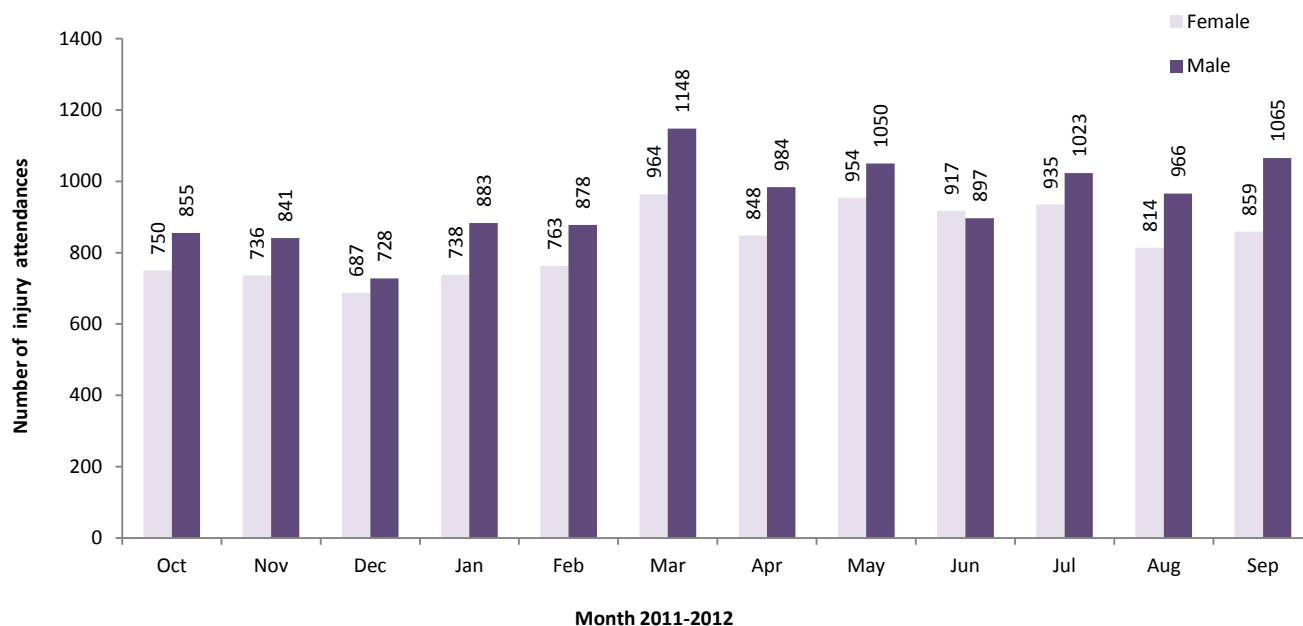
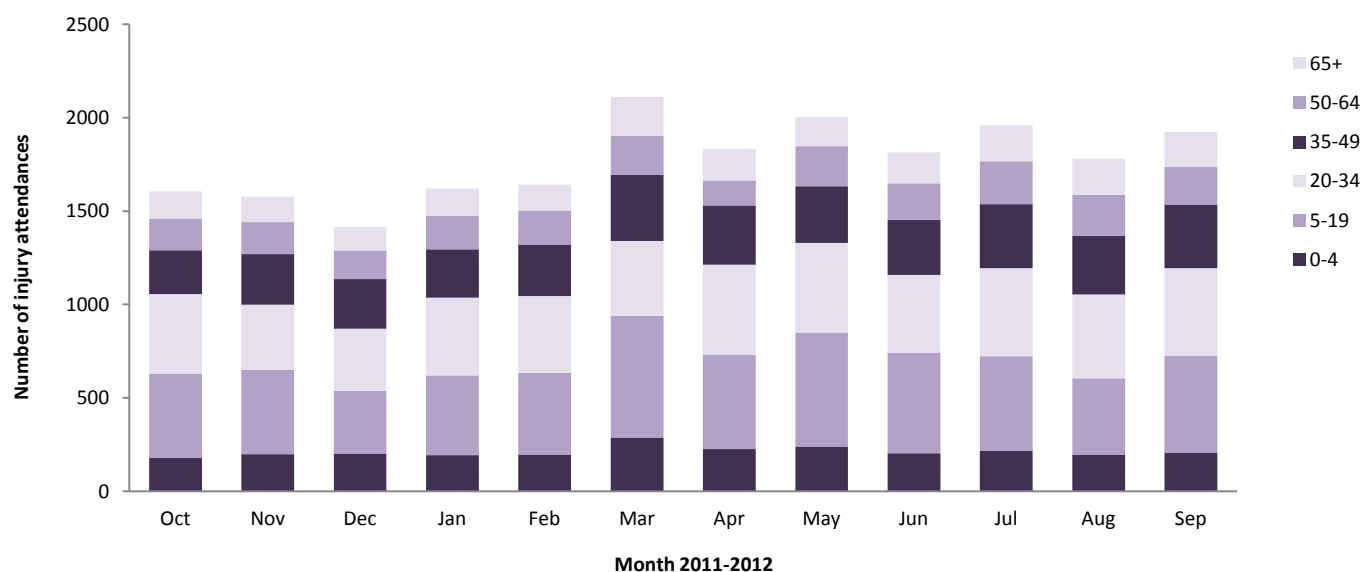


Table 1: Rochdale Infirmary UCC: Total injury attendances by injury group and month, October 2011 to September 2012^{1*}

Injury group	Oct	Nov	Dec	Jan	Feb	Mar	Apr	May	Jun	Jul	Aug	Sep	Total	%
Other injury	1012	1099	887	1094	1038	1536	1346	1363	1250	1344	1192	1338	14499	68
Fall	279	257	281	262	331	310	234	316	252	278	281	263	3344	16
RTC	124	95	97	126	113	82	112	90	157	146	90	139	1371	6
Assault	56	49	62	55	69	77	66	81	51	62	60	56	744	3
Burns and scalds	60	41	50	50	56	47	<35	84	50	48	<51	62	631	3
Bites and stings	64	<35	29	<31	<32	51	33	<67	49	75	103	60	625	3
DSH	10	***	9	***	***	9	<10	***	5	5	***	6	69	0
Total	1605	1577	1415	1621	1641	2112	1832	2004	1814	1958	1780	1924	21283	100

*Percentages may not add to 100 due to rounding.

Figure 2: Rochdale Infirmary UCC: Total injury attendances by age group and month, October 2011 to September 2012



¹ Please note that all numbers less than five have been suppressed in line with patient confidentiality and if there is only one number <5 in a category then two numbers will be suppressed at the next level.

Figure 3: Rochdale Infirmary UCC: Total injury attendances by age group and injury group (excluding other injury), October 2011 to September 2012

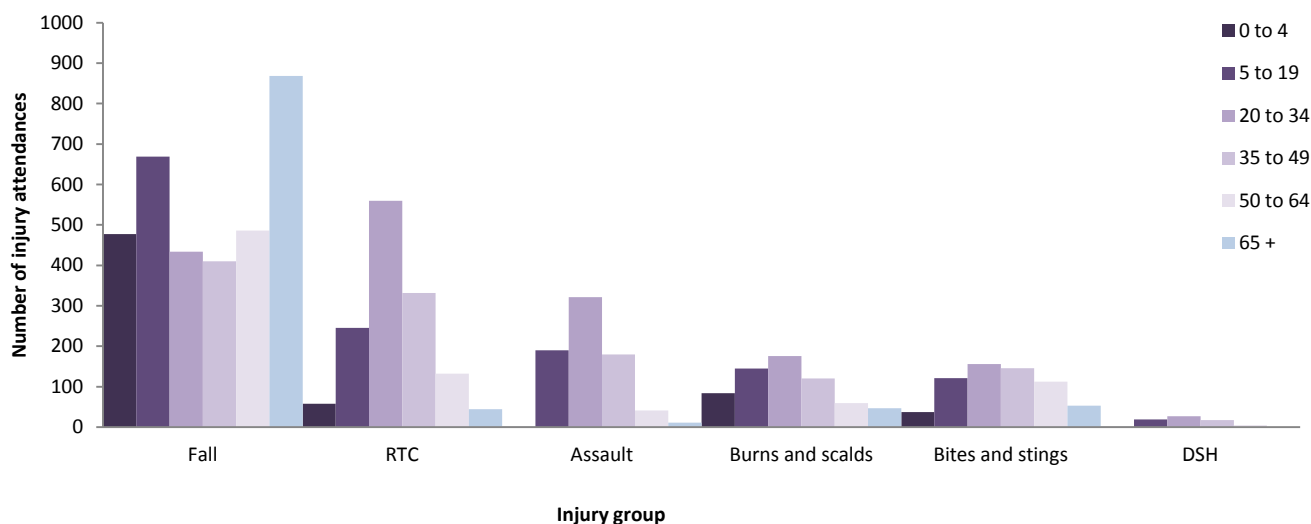


Table 2: Rochdale Infirmary UCC: Total injury attendances by location of incident and injury group, October 2011 to September 2012*

Location	Assault		Bites and stings		Burns and scalds		DSH		Fall		RTC		Other injury		Total	
	n	%	n	%	n	%	n	%	n	%	n	%	n	%	n	%
Home	139	19	252	40	318	50	46	67	1361	41	20	1	7604	52	9740	46
Other	123	17	129	21	49	8	15	22	361	11	1270	93	2315	16	4262	20
Public place	341	46	151	24	<15	2	***	4	869	26	15	1	1458	10	2851	13
Not recorded	82	11	<52	8	183	29	<6	7	367	11	61	4	1301	9	2050	10
Work	35	5	38	6	57	9	0	0	136	4	5	0	902	6	1173	6
Educational establishment	24	3	***	1	<11	2	0	0	250	7	0	0	919	6	1207	6
Total	744	100	625	100	631	100	69	100	3344	100	1371	100	14499	100	21283	100

*Percentages may not add to 100 due to rounding.

Table 3: Rochdale Infirmary UCC: Total injury attendances by ethnicity and month, October 2011 to September 2012^{2*}

Ethnicity	Oct	Nov	Dec	Jan	Feb	Mar	Apr	May	Jun	Jul	Aug	Sep	Total	%
White	1150	1155	1007	1151	1212	1551	1312	1442	1236	1407	1355	1409	15387	72
Pakistani	321	306	299	319	298	362	363	393	412	379	303	349	4104	19
Not recorded	31	37	28	38	34	51	49	47	43	46	36	38	478	2
Bangladeshi	28	22	26	32	24	46	29	44	48	42	28	47	416	2
Black	20	15	15	36	25	36	28	22	23	27	15	24	286	1
Mixed	18	19	20	19	13	28	16	26	13	14	17	17	220	1
Any other ethnic group	10	13	7	11	19	12	16	10	18	23	15	13	167	1
Indian	13	***	5	5	7	<11	8	<8	10	<7	6	12	92	0
Any other Asian background	6	<10	8	10	<7	13	11	11	11	12	***	<13	111	1
Chinese	8	0	0	0	***	***	0	***	0	***	***	***	22	0
Total	1605	1577	1415	1621	1641	2112	1832	2004	1814	1958	1780	1924	21283	100

*Percentages may not add to 100 due to rounding.

Table 4: Rochdale Infirmary UCC: Total injury attendances by method of disposal and month, October 2011 to September 2012³

Disposal	Oct	Nov	Dec	Jan	Feb	Mar	Apr	May	Jun	Jul	Aug	Sep	Total	%
Discharged	1052	909	846	965	988	1266	1156	1320	1088	1246	1069	1195	13100	62
Follow-up/referral	500	616	521	598	587	767	614	625	652	642	653	675	7450	35
Admitted	45	44	38	49	58	58	56	40	51	59	51	46	595	3
Other	8	8	10	9	8	21	6	19	23	11	7	8	138	1
Total	1605	1577	1415	1621	1641	2112	1832	2004	1814	1958	1780	1924	21283	100

² White = Irish, British, other white background; Mixed = white and black, white and Asian, mixed any other; Other = any other ethnic group, any other Asian background; Black = African, Caribbean, other black.

³ Admitted=admitted to UCC bed/became a lodged patient of the same health care provider; Discharged=discharged - did not require any follow up treatment; Referral/follow-up =discharged - follow up treatment to be provided by GP, referred to UCC clinic, referred to fracture clinic, referred to other out-patient clinic, referred to other health care professional; Other=died in department, left department before being treated, left department having refused treatment, other.

Table 5: Rochdale Infirmary UCC: Total injury attendances by method of disposal and injury group, October 2011 to September 2012*

Disposal	Assault		Bites and stings		Burns and scalds		DSH		Fall		Other injury		RTC		Total	
	n	%	n	%	n	%	n	%	n	%	n	%	n	%	n	%
Discharged	443	60	469	75	222	35	29	42	1863	56	9136	63	938	68	13100	62
Follow-up/referral	238	32	150	24	372	59	28	41	1224	37	5020	35	418	30	7450	35
Admitted	25	3	<6	1	22	3	***	6	209	6	326	2	***	0	595	3
Other	38	5	***	0	15	2	<10	12	48	1	17	0	<12	1	138	1
Total	744	100	625	100	631	100	69	100	3344	100	14499	100	1371	100	21283	100

*Percentages may not add to 100 due to rounding.

Table 6: Rochdale Infirmary UCC: Total injury attendances by mode of arrival and month, October 2011 to September 2012*

Arrival mode	Oct	Nov	Dec	Jan	Feb	Mar	Apr	May	Jun	Jul	Aug	Sep	Total	%
Private transport	1191	1147	1080	1193	1190	1546	1394	1480	1330	1430	1322	1453	15756	74
Taxi	113	124	118	133	130	170	147	167	123	165	138	143	1671	8
Other	125	93	71	99	114	145	104	124	140	134	114	105	1368	6
Foot	84	95	65	95	106	127	100	118	98	106	96	109	1199	6
Ambulance	36	58	48	51	46	76	53	58	79	70	65	67	707	3
Public transport	34	49	13	32	33	34	26	30	34	33	33	24	375	2
Work transport	<20	<10	14	<17	17	7	<6	19	<8	13	<9	14	147	1
Police	***	***	6	***	5	7	***	8	***	7	***	9	60	0
Total	1605	1577	1415	1621	1641	2112	1832	2004	1814	1958	1780	1924	21283	100

*Percentages may not add to 100 due to rounding.

Table 7: Rochdale Infirmary UCC: Assault attendances by gender, incident location and age group of attendance, October 2011 to September 2012*

Gender	Assaults (n=744)		All injuries (n=21,283)
	n	%	%
Female	224	30	47
Male	520	70	53
Location			
Home	139	19	46
Other	123	17	20
Public place	341	46	13
Not recorded	82	11	10
Work	35	5	6
Educational establishment	24	3	6
Age group			
0 - 4	***	0	12
5 - 19	190	26	25
20 - 34	321	43	23
35 - 49	180	24	16
50 - 64	41	6	10
65 plus	<12	1	13

*Percentages may not add to 100 due to rounding.

Author: Jennifer Brizell, Published: December 2012

For further information please contact: Val Upton, Centre for Public Health, Research Directorate, Liverpool John Moores University, 2nd Floor, Henry Cotton Building, 15-21 Webster Street, Liverpool, L3 2ET.

Tel: 0151 231 4500 or Email j.s.brizell@ljmu.ac.uk

Website: www.tiig.info (data requests should be made through the website)